



LATROBE UNIVERSITY BUNDOORA PUBLIC LIGHTING UPGRADE

Latrobe University Public Lighting Upgrade

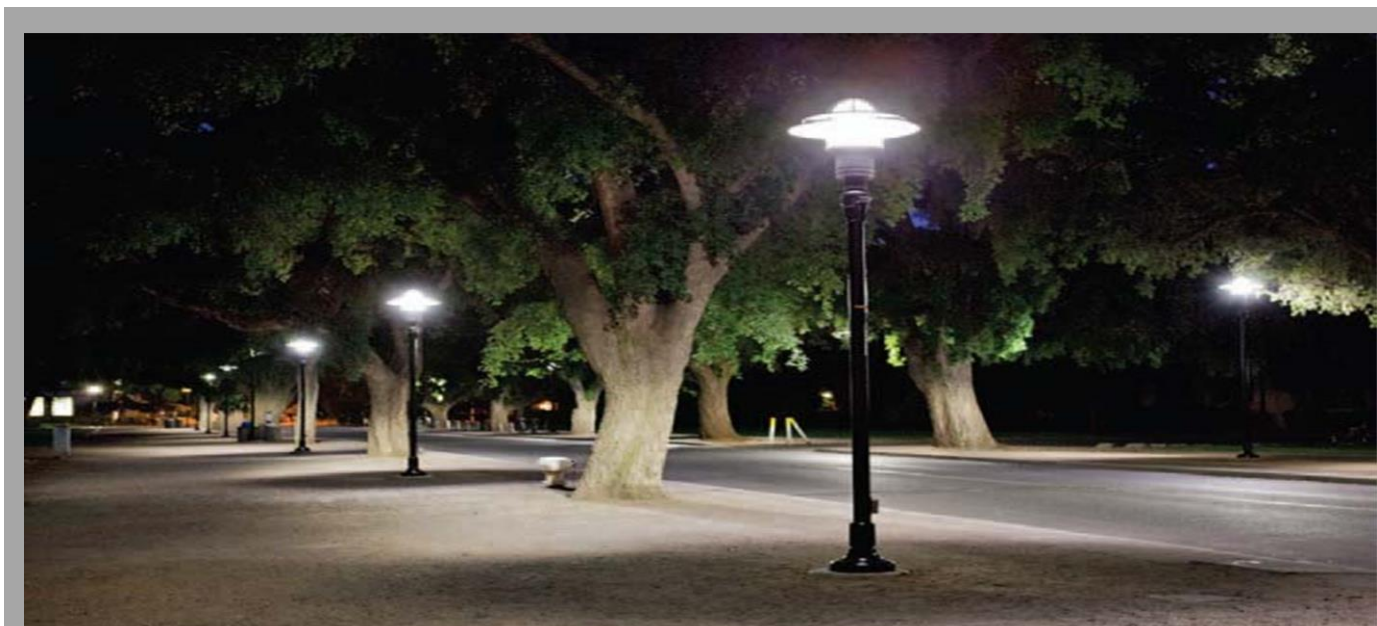
APEC were awarded a Stage 1 of a large scale external public lighting upgrade at the Bundoora Campus of Latrobe University. Stage 1 of a multi-stage project included the Supply & Installation of 182 External Architectural Light Poles. Of the 182 Poles, there are 158 @ 5.5Mtr and 24 @ 10.5Mtr.

Under the direction of the client and head contractor (Built), APEC worked in collaboration with a lighting designer to select a local supplier that sourced the poles and lights internationally. Key elements of the design considerations included review and audits of the supplier's quality assurance systems and ability to deliver on time and budget.

Challenges presented during this project included; approx. 12km of trenching, underground directional boring, underground scanning of existing services, working with arborists to establish "TPZ" Tree Protection Zone Procedures and carrying out finished surface reinstatements, all whilst ensuring the final product was an aesthetically pleasing architectural pole whilst maintaining the engineering requirements of a robust pole within wind/pole deflection limit requirements.

Details

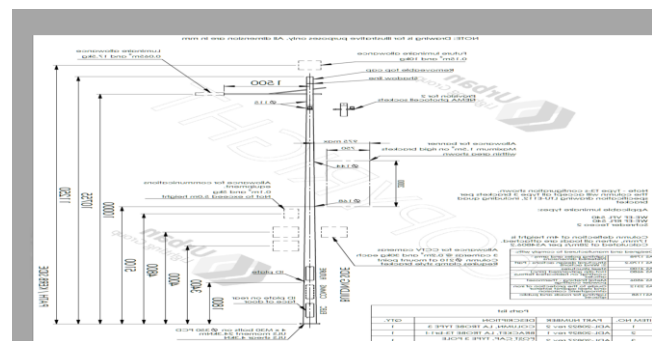
Job Value: \$2.6M (Stage 1)



Latrobe Road/Path Lighting Scheme



Latrobe Pathway



Latrobe Shop Drawing